

Clipboard Pro

Copyright © 2001-2004, Pavel Aronovich
<mailto:support@apbsoft.com>
<http://www.apbsoft.com>

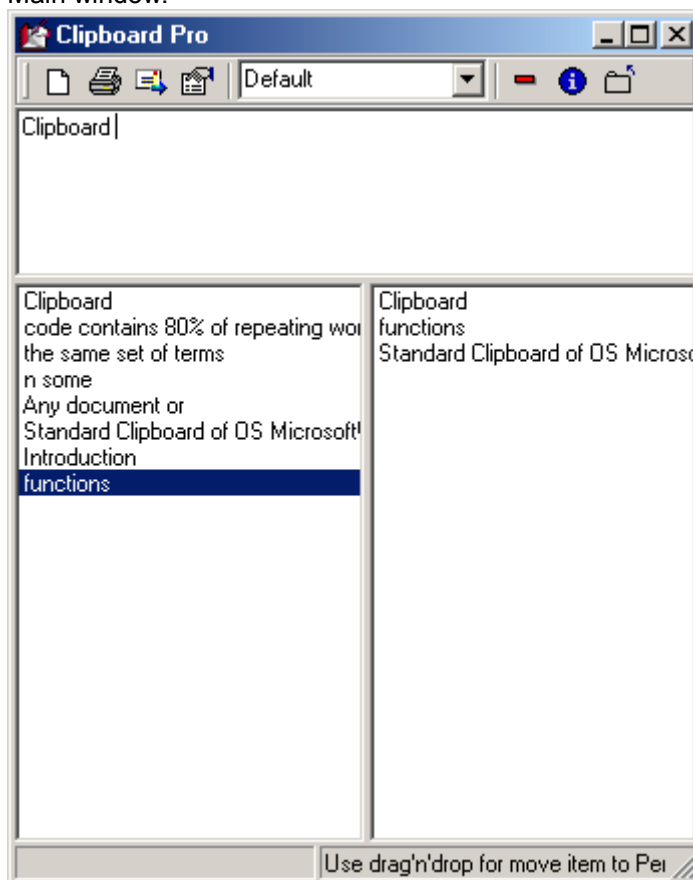
Introduction

Standard Clipboard of OS Microsoft® Windows allows to store only the recent saved data. This is especially inconvenient when you work with program texts and with large documents. Any document or source text contains a big number of repeating words and phrases. If you often write documents in some data domain (finance, history, etc.) then all of them contain the same set of terms and phrases. Surely you had an idea when you typed a phrase or a long word, that you wrote that already just recently. I don't mention software developers. The source code contains 80% of repeating words and constructions. Often you need to send a small fragment of a document or program source to your colleague or friend by e-mail. You know how many actions you need to do for that. And Clipboard Pro offers an elegant solution for all these tasks.

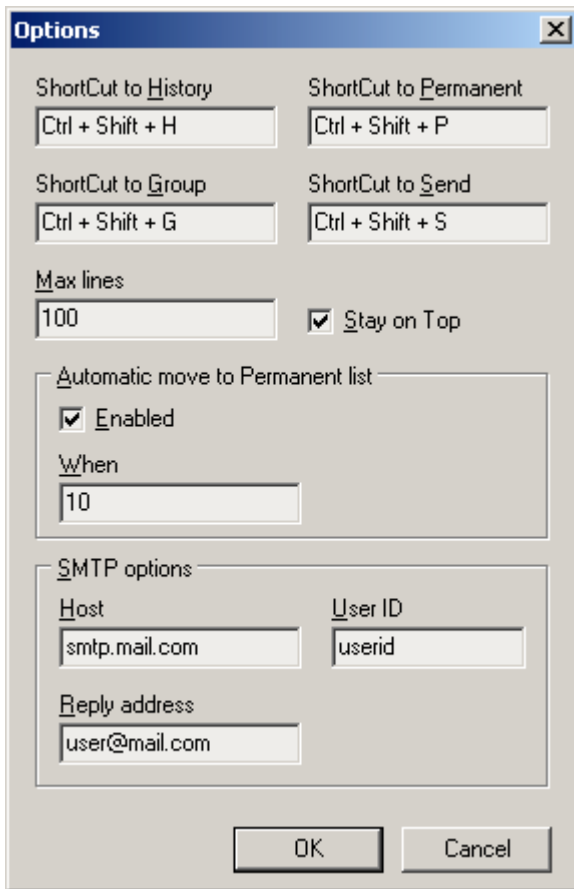
How can the output of your work improve if you do not need to repeat the same? I think, a lot!
Clipboard Pro is urged to solve the task of more efficiently using of the Clipboard.

Main functions of Clipboard Pro

Main window:



General options:



1. **History tracking** – persisting of data stored in the clipboard. It looks like a queue of unlimited size. You save data to the clipboard and they are automatically stored to the beginning of the queue. On the next saving previous data is shifted to the next position in the queue and the first position is taken by the recent saved data. And so on, when the queue is full the most outdated is purged, freeing place for the newest one. When you use data from the clipboard they are moved to the most recent area, so they are always in your way. Additionally, the most using data are automatically placed to the “hot list” (see Options).
2. **Keeping of a “permanent list”** – collecting of clipboard contents in a permanent storage for further using. The permanent storage is maintained automatically or with using function Import.
3. **Data grouping** – keeping all data grouped. Useful for processing of different categories of documents or different software languages (HTML, SQL, C++).
4. **Exchange of data from your clipboard or “permanent list”** with your colleagues, friends and other people worldwide (there is a Subscription function for that).

Clipboard Pro is very friendly and easy. You need no special skills to use it. Clipboard Pro is implement with a maximum usability. You may control it with only keyboard, no computer mouse if you prefer that. Clipboard Pro complete support of the various code pages: ANSI, UNICODE, OEM.

Context menu “Clipboard history”:

<Clipboard history>	
Paste and Hide (DoubleClick/Return)	
Search	Ctrl+F
Copy	Ctrl+C
Delete item	Del
Clear	Shift+Del
Move to Permanent List	Ctrl+M

Context menu “Permanent list”:

<Permanent list>	
Paste and Hide (DoubleClick/Return)	
Search	Ctrl+F
Copy	Ctrl+C
Delete item	Del
Clear	Shift+Del
Export	Ctrl+E
Import	Ctrl+I
Send Permanent List ...	
Split	Ctrl+S
Collect	Ctrl+O

Clipboard Pro setup

1. Install software to your computer (setup.exe)
2. Software is registered in the "Startup" folder for your login profile
3. After installation completion start the program (setup program will offer you that after installation succeeds)
4. Choose Options icon on the main toolbar of the program
5. Configure everything in this window. Remember all hot keys you choose
6. Press OK button
7. Resize the window and place it to the location on you screen you prefer
8. You are ready to use it
9. Hide the program using a button on the toolbar (or press key "Esc")

Clipboard Pro is always in your way: there is an icon with a notepad and pen in your system tray.

How to use Clipboard Pro

Groups

Initially the program works with **Default** group (you may see a combo box on a toolbar). You can add a new group yourself. Enter a name for the new group to the combo box and either press a **Tab** key or click a mouse somewhere on the window. The configuration of the previous group is persisted and is left in the window. If you do not need it anymore, you may delete it, use a **Clear** command for that. You may switch between groups using the same combo box. You can setup a hot key for a quick access to the combo box (see Options, for instance Ctrl+Shift+G). On exit the configuration is saved on your hard disk and will be used the next time you start the program.

Placing data to the clipboard

When you save data to the clipboard (Copy, Cut) from any program (usually it is Ctrl+Ins or Ctrl+C, Shift+Del or Ctrl+X) they are automatically placed to the history of Clipboard Pro.

Pasting data from the clipboard

To paste data from the history (for instance, Ctrl+Shift+H) or the permanent list (for instance, Ctrl+Shift+P) directly from your editor you need to press a hotkey combination configured in Options.

Now you are in the list you need. You can find data in the list by typing a part of the string or you can use a search function (Search, Ctrl+F).

After you choose a line or few lines in the list you press Enter (Return) or double click mouse button (only with a single line). Data is placed into the clipboard and paste into active application and Clipboard Pro window hides.

Moving data from the "history" to the "permanent list"

If you want to move data from the history to a permanent list manually, you should choose a line or multiple lines in the history, then click a left mouse button and drag-and-drop data to the permanent list, after that release the mouse button. Data is placed to the permanent list.

Sending the content of clipboard by e-mail

If you need to send the content of your clipboard by e-mail, press a configured hot key (see Options, for instance, Ctrl+Shift+S). Clipboard Pro creates a new e-mail message using your default e-mail program; you will need only to add recipients of the message.

Other functions of Clipboard Pro

Split function – its target is to split a data from a single permanent list cell to multiple lines and place every line to a separate cell.

Collect function – inverse function for Split.

Export/Import functions – are used for exchanging your permanent list with your correspondents.

Send Permanent List function – allows sending your “permanent list” by e-mail. To use this function you need to know your SMTP server configuration and have your Internet connection to be configured. Alternatively you may use Export function and then send an exported file manually.

In Clipboard Pro you may subscribe to new permanent list distribution. This function is free for registered users. Thus you may get permanent lists created by other users of the program.

Shareware

Clipboard Pro is a so-called conditionally free software (Shareware). If you use a limited evaluation version of Clipboard Pro and want to purchase a full version, you need to click a **<Buy now>** button in an **About** window (you need to have an Internet connection for that). After that follow instruction on the web site.